

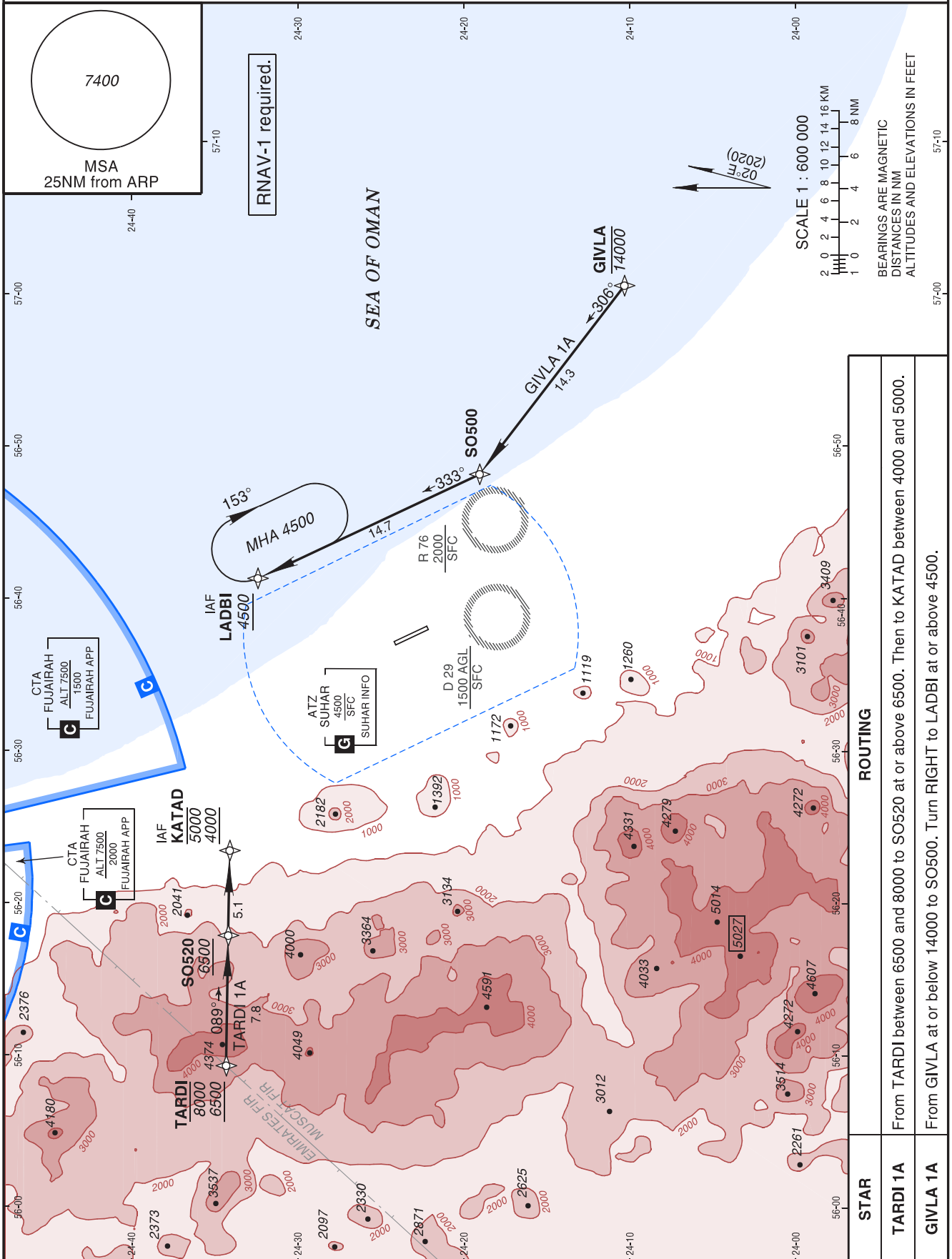
STANDARD ARRIVAL
CHART INSTRUMENT
(STAR) - ICAO

AD ELEV 144 FT
Trans Alt 13000
Trans Level FL150

SUHAR Information 118.725

SUHAR/Suhar
OMAN
RWY 15

TARDI 1A, GIVLA 1A RNAV (GNSS) ARRIVAL



Holding Instruction/Areas RNAV (GNSS) ARRIVAL RWY 15

Path descriptor	Fix identifier	Inbound course M (T)	Leg Distance	Turn direction	Minimum altitude	Maximum altitude	Speed	Magnetic variation	Navigation performance
Hold	LADBI	333° (334.9°)	1 MIN	R	4500		230 KT	2°E	

Route Description: RNAV (GNSS) ARRIVAL RWY 15

Path descriptor	Fix identifier	Flyover	Course Magnetic (True)	Turn direction	Altitude	Speed limit	Magnetic variation	Distance	Navigation performance
TARDI 1A ARRIVAL									
IF	TARDI				-8000 +6500		2°E		RNAV 1
TF	SO520		089° (090.9°)		+6500		2°E	7.8	RNAV 1
TF	KATAD		089° (090.9°)		-5000 +4000		2°E	5.1	RNAV 1
GIVLA 1A ARRIVAL									
IF	GIVLA				-14000		2°E		RNAV 1
TF	SO500		306° (307.5°)				2°E	14.3	RNAV 1
TF	LADBI		333° (334.9°)	R	+4500		2°E	14.7	RNAV 1

Aeronautical Data Tabulation: RNAV (GNSS) ARRIVAL RWY 15

Waypoint / Fix	Latitude	Longitude	Latitude (MIN)	Longitude (MIN)	Notes
TARDI	N24°34'18.0"	E056°09'15.0"	N24°34.300'	E056°09.250'	
SO520	N24°34'10.6"	E056°17'48.3"	N24°34.177'	E056°17.805'	
KATAD	N24°34'05.5"	E056°23'23.9"	N24°34.092'	E056°23.398'	
GIVLA	N24°10'19.7"	E057°00'31.8"	N24°10.328'	E057°00.530'	
SO500	N24°19'03.3"	E056°48'07.5"	N24°19.055'	E056°48.125'	
LADBI	N24°32'24.0"	E056°41'17.0"	N24°32.400'	E056°41.283'	